



## Harold Road, Hastings TN35 5NW

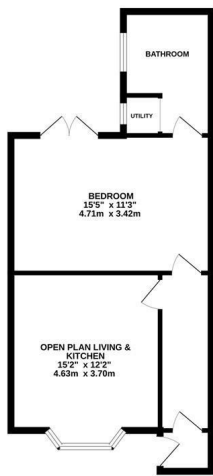
Offers in excess of £585,000



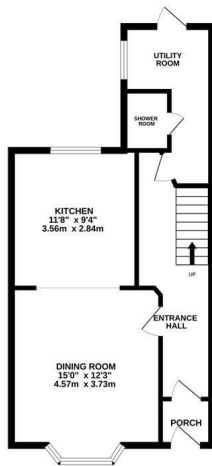
An attractive FOUR STOREY VICTORIAN HOUSE situated in an enviable position on the cusp of Hastings Old Town with far reaching views towards The East Hill. It's located just a short walk from the East Hill, Hastings Country Park, the seafront and the Old Town which offers a collection of independent shops, galleries, restaurants and traditional pubs. The VERSATILE ACCOMMODATION here is arranged as a three storey house with a SELF-CONTAINED ONE BEDROOM APARTMENT spanning the lower floor, offering the perfect set up for those seeking multi-generational living or a home and income opportunity.

You enter on the hall floor where there is a bay fronted dining room with a limestone fireplace which was made in Italy, it's open to the stylish kitchen to create a BRIGHT, DUAL ASPECT SPACE. The kitchen is fitted with CONTEMPORARY UNITS housing integrated appliances, a large pantry cupboard and there is ample room for a

LOWER GROUND FLOOR  
APARTMENT  
532 sq ft. (49.4 sq.m.) approx.



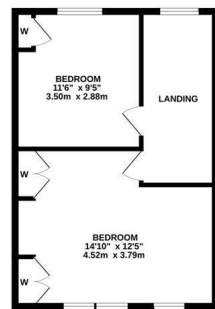
HALL FLOOR  
516 sq ft. (47.9 sq.m.) approx.



1ST FLOOR  
510 sq ft. (47.4 sq.m.) approx.



2ND FLOOR  
430 sq ft. (39.9 sq.m.) approx.



TOTAL FLOOR AREA: 1988 sq.ft. (184.7 sq.m.) approx.

Whilst every attempt has been made to ensure the accuracy of the floorplan contained here, measurements of doors, windows, rooms and any other items are approximate and no responsibility is taken for any error, omission or mis-statement. This plan is for illustrative purposes only and should be used as such by any prospective purchaser. The services, systems and appliances shown have not been tested and no guarantee as to their operability or efficiency can be given.  
Made with Metropix ©2025

